

Czech composition 2004–2006

In August 2009 was published new selection of the best Czech chess problems and studies for period of 2004–2006. In this minireview I would like to show some of good compositions, at least according to my opinion.

The selection process is different in comparison to FIDE Album. In each section there are two (foreign) judges, each of them marking problems on a scale from 0 to 10. Problems with average 5 and more points are published in the Album. Almost all composers submitted their problems, so the result creates quite comprehensive overview about the Czech composition, although the number of problems for each section is limited to 8 by one author.

The level of direct mates composition in the last years in Czechia is very moderate. So here only one threemover (CZ1) of the late Vladimír Kos is presented, with perfect use of all white pieces, including pawn on d2, which mates three times. The last pin mate is not very common in the Bohemian school. Only for statistics number of submitted and selected problems: in twomovers 50/13, in threemovers 35/12 and in moremovers 22/7.

Vladimír Kos
98 Šachové umění 11/2005

#3 (8+9)
C+ CZ1

1. ♔e8! thr. 2. ♔a4+ ♚xe5 3.d4#

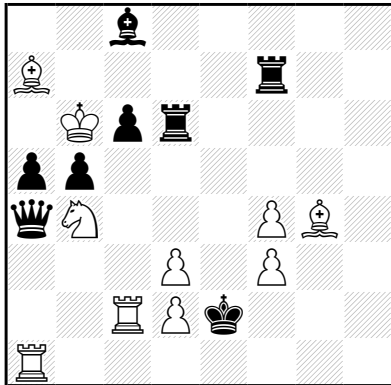
1... ♞e3 2. ♙xe3+ ♚xe4 3.d3#

1... dxe4 2. ♔d8+ ♚xe5 3.d4#

Judges in helpmates section were more severe than in the past. Only 11 from 49 problems were selected. Composition CZ2 shows four different moves of white King opening the diagonal a7-g1 for white Bishop with two various ways how to activate prepared white batteries – by sacrifices of attacking black units or by captures of blocking white pawns and interference of black pieces.

Michal Dragoun + Dieter Müller

4. Prize Pobeda 60 JT C 20. 4. 2005



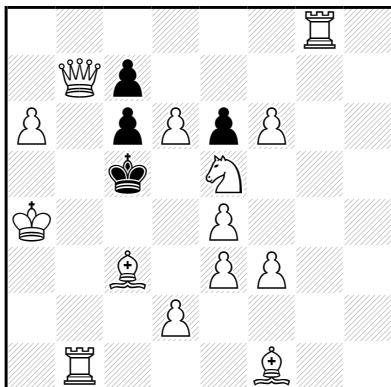
H#2 4.1.1.1 (10+8)
C+ **CZ2**

1. ♖b3 ♔xa5 2. ♗c3 dxc3#
 1. ♕f5 ♚a6 2. ♕e4 fxe4#
 1. ♜xd3 ♚xc6 2. ♜b3 d3#
 1. ♜xf4 ♚c7 2. ♜f5 f4#

Contemporary selfmate in Czechia has more prolific composers at the good level. They mostly (here especially Zdeněk Libiš, Jiří Jelínek and Vladislav Buňka can be named) create his problems in Bohemian style. Problem CZ3 shows chameleon echo mates with nice point in promotion to the white Rook in the key – Queen would guard b6 in the first variation.

Jiří Jelínek + Jurij Fomičev

4046 Uralskij problemist 1/2006



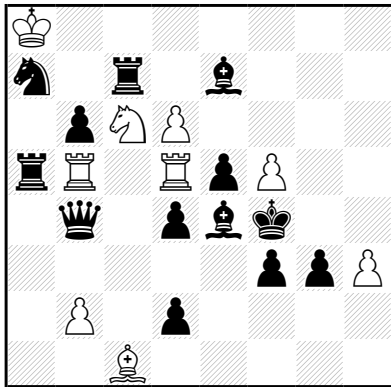
S#6 (14+4)
C+ **CZ3**

1. ♜g5! ♔xd6 2.d8 ♜+ ♔c5 3. ♜f5 exf5 4. ♚a5 fxe4/f4
 5. ♜b5+ cxb5 6. ♗b6+ cxb6#
 1...cxd6 2. ♘d3+ ♔c4 3. ♜c5+ dxc5 4. ♕a5 e5 5. ♜b4+
 cxb4 6. ♗b5+ cxb5#

The level of Bohemian fairies is good too, it is possible to mention composers Václav Kotěšovec, František Sabol and Michal Dragoun, however the basis is more wide here. In this section number of entries was the highest one (75) and 48 was selected. Composition CZ4 is in preliminary selection for FIDE Album in period 2004-2006 too and shows eight switchbacks of white Knight based on interesting Circe strategy. It is necessary to eliminate black Queen, create black battery on the eight rank and open lines for white Rooks on d file and fifth rank.

Václav Kotěšovec

2. H. M. Šachmatna misal 2004



SS#18

Circe, White
maximummer

(9+13)

C+

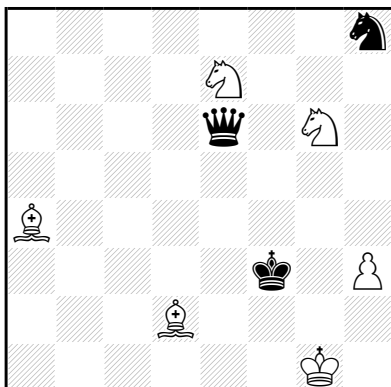
CZ4

1. ♖xe5 2. ♖c6 3. ♖xe7(♙f8) 4. ♖c6 5. ♖xa5(♚h8)
6. ♖c6 7. ♖xa7(♜b8) 8. ♖c6 9. ♖xb4(♚d8) 10. ♖c6
11. ♖xd8 12. ♖c6 13. ♖xb8 14. ♖c6 15. ♖xd4(d7)
16. ♖c6 17. ♚xd2 18. ♚h2+ ♙xd6(d2)#

The most famous studies composer in last years is in Czechia Mario Matouš, but there are other composers on very good level too, Jaroslav Polášek and Emil Vlasák. Here the best study CZ5 is quoted, with one of author's favourite themes: battle of white minor pieces against black Queen. The solution is clear and quiet white moves and sacrifices impressive. Two variations end in interference of black Queen.

Mario Matouš

1. Prizé Československý šach 2005-2006



+

(6+3)

CZ5

1. ♙c6+ ♚g3 2. ♖f5+! It doesn't work 2. ♙f4+? ♚xh3
3. ♙g2+ ♚g4 4. ♙h2 ♜xg6 5. ♙h3+ ♚xf4 6. ♙xe6
♜xe7. 2... ♚xf5 or 2... ♚xh3 3. ♙g2+ ♚g4 4. ♖h6+
♚h5 5. ♖f4+. 3. ♙e1+ ♚xh3 4. ♖e5! ♚g5+ 5. ♙h1
♚g7 5... ♚g3 6. ♙d7+ ♚h4 7. ♖f3+. 6. ♙f2!! and
6... ♜f7/♜g6 7. ♙d7/♙g2 mat.